

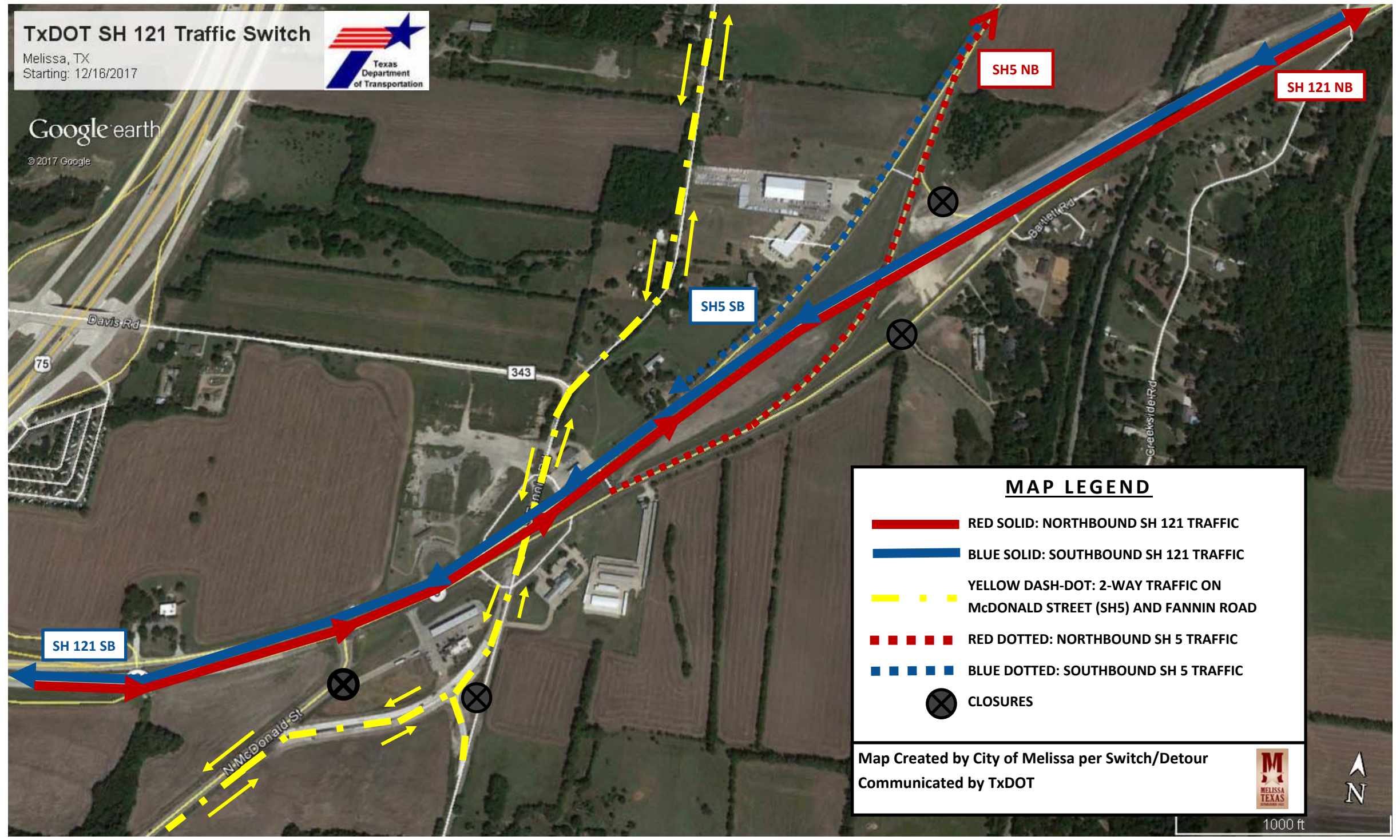
TxDOT SH 121 Traffic Switch

Melissa, TX
Starting: 12/16/2017



Google earth

© 2017 Google



MAP LEGEND

- RED SOLID: NORTHBOUND SH 121 TRAFFIC
- BLUE SOLID: SOUTHBOUND SH 121 TRAFFIC
- YELLOW DASH-DOT: 2-WAY TRAFFIC ON McDONALD STREET (SH5) AND FANNIN ROAD
- RED DOTTED: NORTHBOUND SH 5 TRAFFIC
- BLUE DOTTED: SOUTHBOUND SH 5 TRAFFIC
- CLOSURES

Map Created by City of Melissa per Switch/Detour
Communicated by TxDOT



1000 ft